

# Elite

Contract Furniture



## *Flooring Brochure*

*An Introduction to Elite's Flooring*

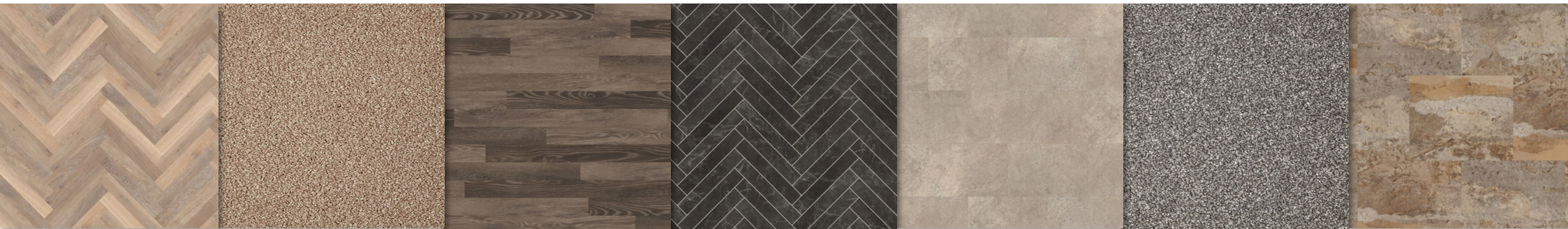
[www.elitecontractfurniture.co.uk](http://www.elitecontractfurniture.co.uk)

# *Flooring by Elite*

## Plush Carpets and Practical Vinyl

Flooring is an instrumental part of any room, laying the foundation for everything else in the space, from furniture to wallpaper and lighting. Often the longest standing part of any room, it is important to select a long lasting, practical yet timelessly stylish floor.

Our team of product specialist are able to advise on a wide range of flooring materials, helping you select the appropriate material, colour and finishes to provide durable, beautiful flooring.







# What To Know

## Style, Sizes and What We Need From You

Fitting flooring doesn't need to be daunting. There are a few simple sizes and pieces of information we need from you in order to help guide you in the best direction, and fit the flooring appropriately.

When in doubt, please let the team know, as we have a team of installation staff, available to visit site and measure spaces ensuring the perfect fit.



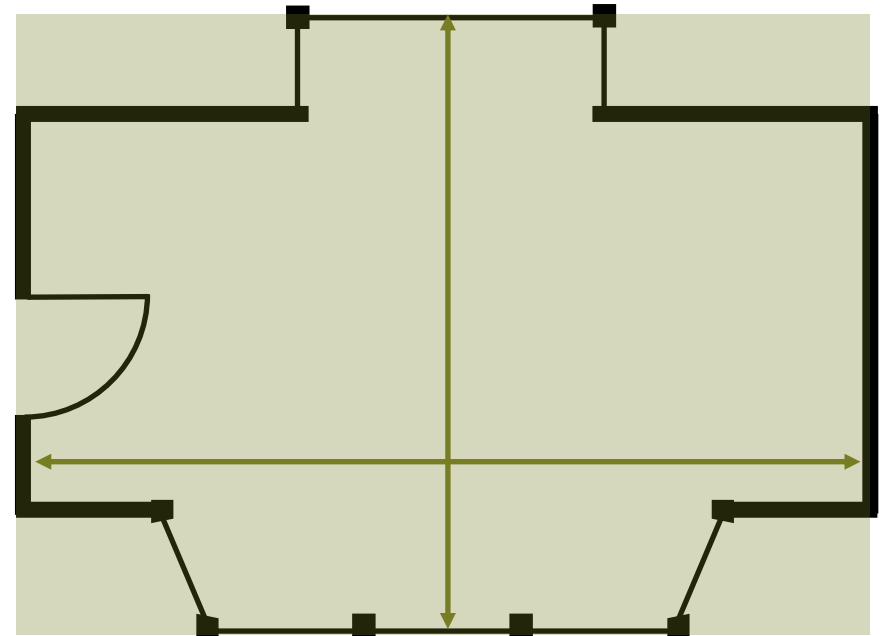
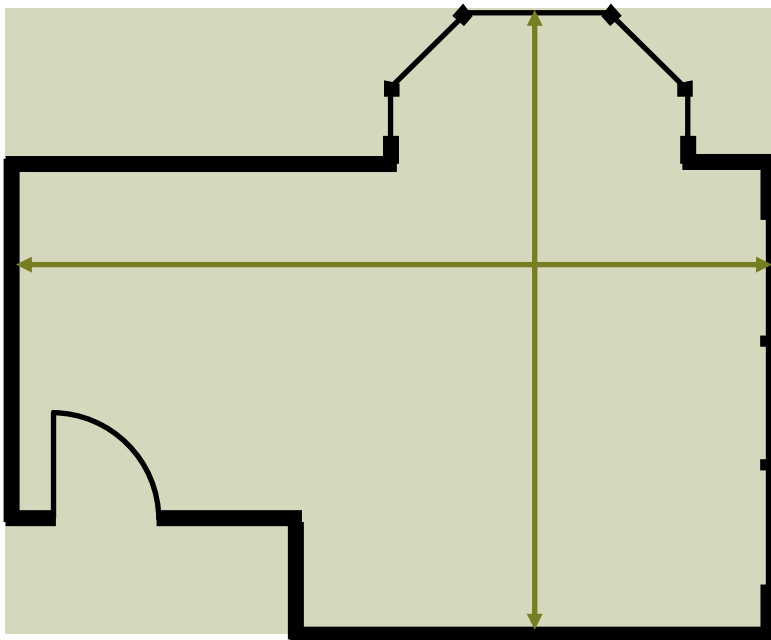
# Guide to Measuring

When measuring for flooring, it is essential to consider all unusual shapes and features in the room you are fitting.

Measure the width and length of each room from the very longest section of any space.

This will then give you the total square meterage needed to fit the flooring with no unsightly joins.

Two examples are shown below, showing the total width and length, then highlighting the area in green.



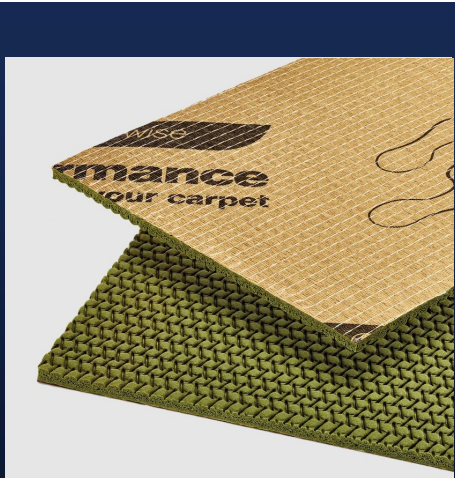


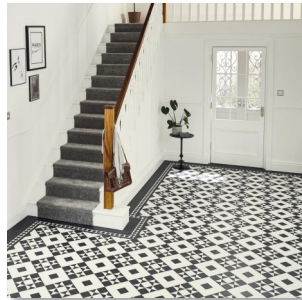
# Laying the Foundations

## Underlay Does More Than Increase Comfort

Underlay can play a critical part in the longevity, comfort and experience of any flooring you fit.

Beyond adding extra bounce to flooring, they can be a great tool at reducing noise, helping to keep the temperature in a room more consistent, as well as helping your flooring last longer.







*Thank You*

We look forward to speaking soon

Our showroom is open Monday to Thursday 8 - 4. We recommend phoning ahead to ensure a member of our sales team is available to meet with you and discuss your needs.

Our phone and email information is below.



0141 429 1124



hello@elitecontractfurniture.co.uk



www.elitecontractfurniture.co.uk



3 Spiersbridge Way, Thornliebank, Glasgow, G46 8NG

Scan to visit our website

